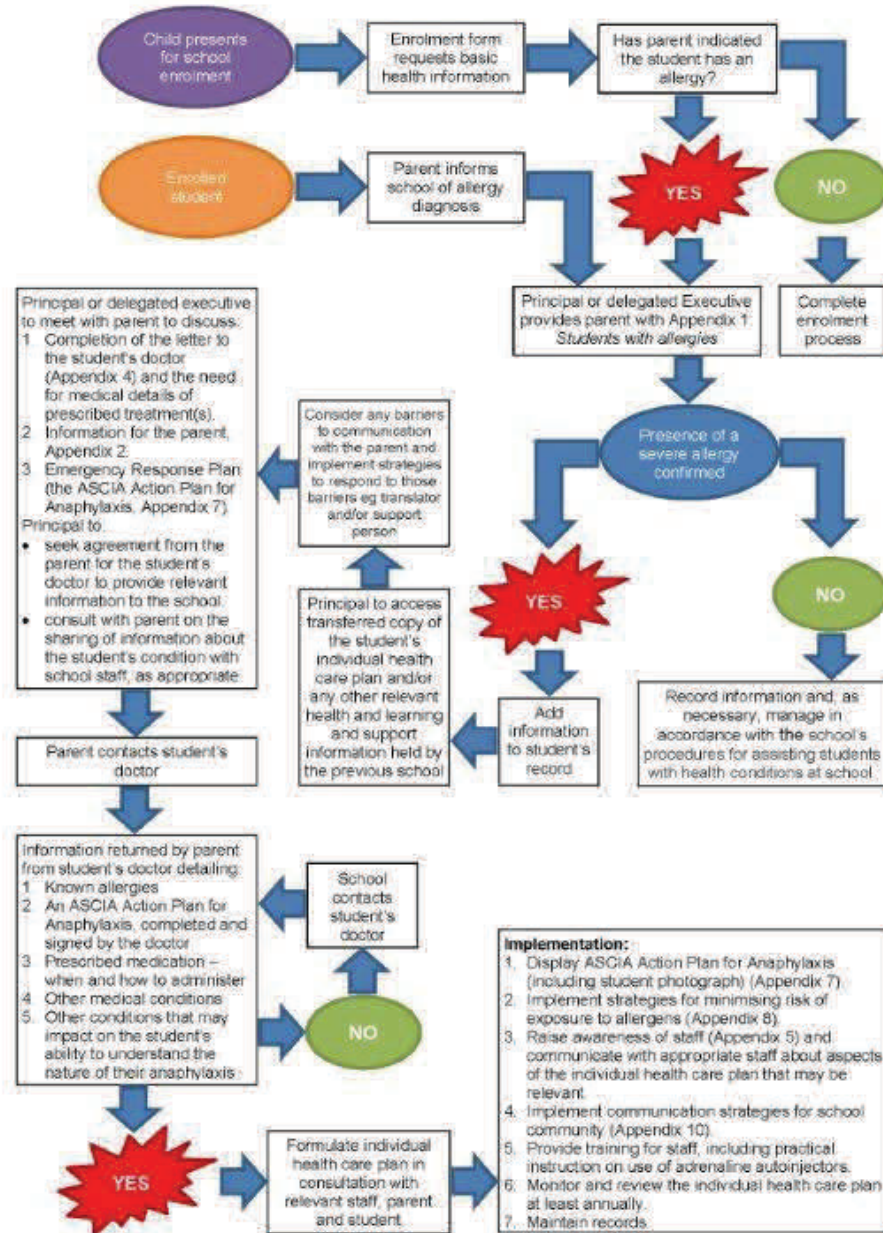


## Managing Anaphylaxis at School

At Glenmore Road Public School, Anaphylaxis is managed in accordance with the guidelines of the NSW Department of Education and Communities. This policy is to be read in conjunction with the DEC Anaphylaxis, Procedures for Schools 2012 located at <http://www.schools.nsw.edu.au/>.

### What is anaphylaxis?

Anaphylaxis is a severe and sometimes sudden allergic reaction. It can occur when a susceptible person is exposed to an allergen (such as a food or an insect sting). Reactions usually begin within minutes of exposure and can progress rapidly over a period of up to two hours or more. **Anaphylaxis is potentially life threatening and always requires an emergency response.**



**When do I notify the school that my child has an allergy?**

It is the responsibility of the parent to notify the school that their child has an allergy and is at risk of anaphylaxis. This notification should occur either at the time of enrolment, or if the student is already enrolled, as soon after diagnosis as possible.

## What happens next?

As with other serious health conditions, it is important that schools put in place strategies to manage a student at risk of anaphylaxis. It is important that:

- a partnership is established between the parent and the school
- every reasonable effort is made to minimise the exposure of a student who is at risk of anaphylaxis to known allergens within the school environment
- the full range of the student's learning and support needs are identified in relation to their anaphylaxis
- an ASCIA2 Action Plan for Anaphylaxis, signed and dated by the student's doctor is provided to the school by the parent for the individual student.



If written information provided by the parent from a doctor confirms that their child has been assessed as being at risk of anaphylaxis, an individual health care plan must be formulated by the principal in consultation with the parent and relevant staff, and where practicable, the student and their doctor.

The individual health care plan must include an ASCIA Action Plan for Anaphylaxis for the individual student signed by their doctor and a plan for the avoidance of known allergens, developed by the school with regard to their particular environment and drawing on advice from the student where practicable, and the student's parent and doctor.

Planning must take into account the student's full range of learning and support needs. In addition, the severity of an anaphylactic reaction can be influenced by the presence of asthma.

Glenmore Road Public School  
Cambridge Street  
Paddington NSW 2021  
Australia  
[www.glenmoreroadpublicschool.com](http://www.glenmoreroadpublicschool.com)



# Glenmore Road Public School

## Anaphylaxis Policy and Procedures

