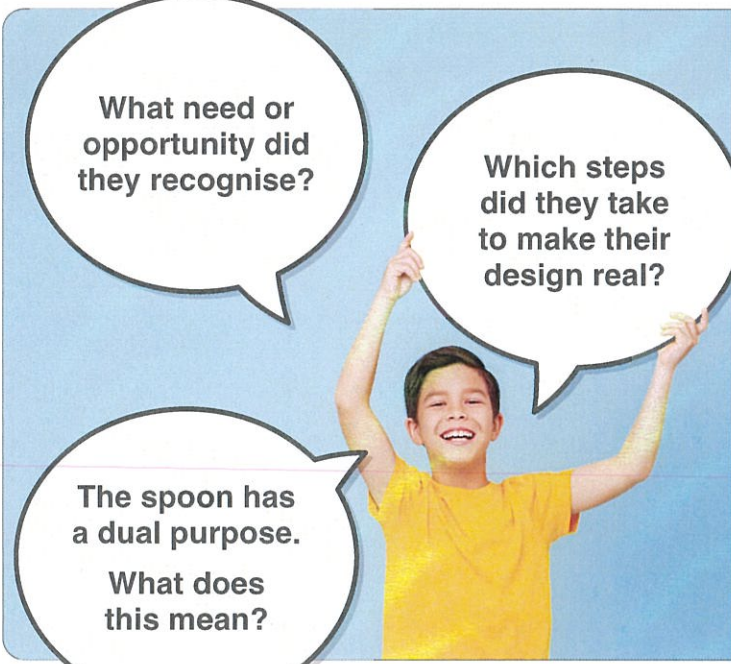


- 2  Watch the *Edible Spoons* video.

Naranya and Pradnya invented a new mass produced product, available to many.


- 3 Think, Pair and Share your ideas about the questions.



What need or opportunity did they recognise?

Which steps did they take to make their design real?

**The spoon has a dual purpose.
What does this mean?**



Did you know?

Over 100 million plastic spoons are thrown away every day!

The edible spoon is biodegradable. It breaks down into natural parts.

Our food is often sold in plastic packaging and consumed using plastic utensils. Like the inventors of the edible spoons, many producers are now thinking of more sustainable ways for us to buy and consume our food.

- 4 With a partner or group, think of some creative, sustainable alternatives to the plastic products you see below.



Making something in a **sustainable** way means that it can be continued to be produced without harming the environment and wasting our natural resources.

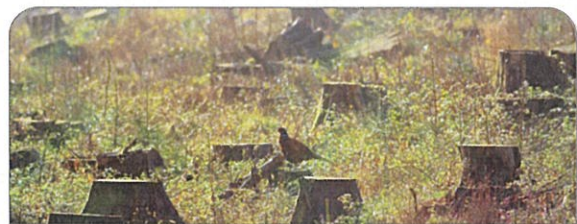
- 5 State a claim. Is the edible spoon a sustainable product?
Support your answer.

Over the last one hundred years, farms have become bigger, producing food and fibre on a massive scale. This is called industrial farming. Scientists believe this type of farming is unsustainable. If it continues, the damage to our environment cannot be undone.

Unsustainable farming can cause...



Soil erosion and water shortage



Deforestation



Animal loss

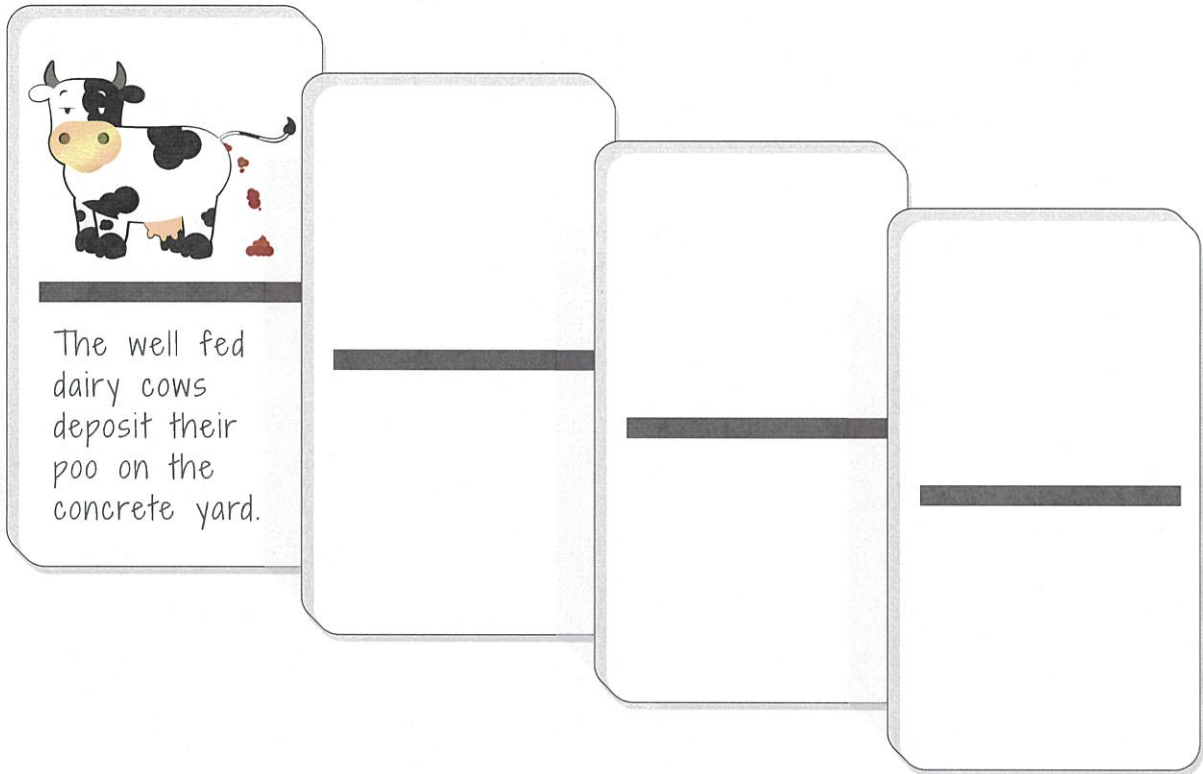


Air pollution

Over recent years, however, farmers and producers of food and fibre have been thinking of innovative and clever methods to grow their products in a more sustainable and environmentally friendly way.

6  Watch the video *We Make Waste Work!*

7 Using the dominoes organiser, sequence the main events from the video, showing the process the farm took to be sustainable. Add more dominoes if needed.



Complete the statement.

This process is an example of sustainable farming because...
